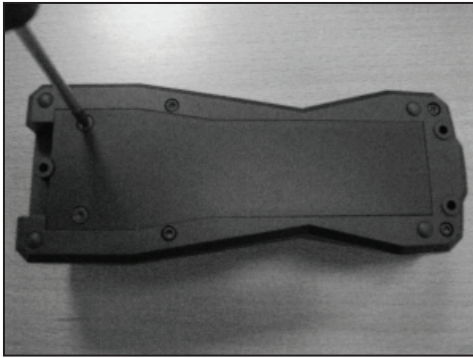


AVIATOR Handset Charging Kit

Connecting an AC/DC Adapter to the charging cradle

The cradle for the AVIATOR Wireless Handset serves as a charger when it is connected to an external power supply (10-32 V DC, 7 W). Then you can charge the AVIATOR Wireless Handset outside the aircraft.

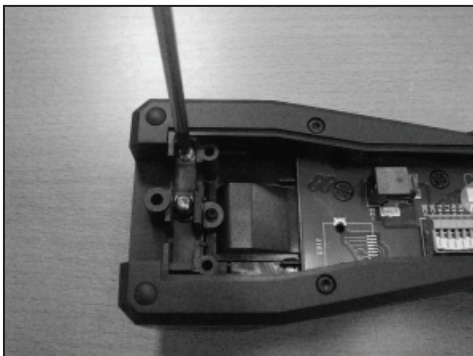
To connect the external AC/DC Adapter to the charging cradle, do as follows:



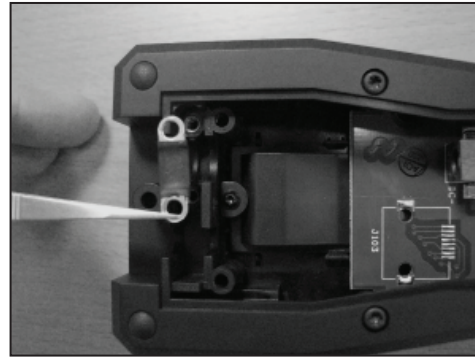
1. On the back of the cradle, unscrew the two screws holding the cover.



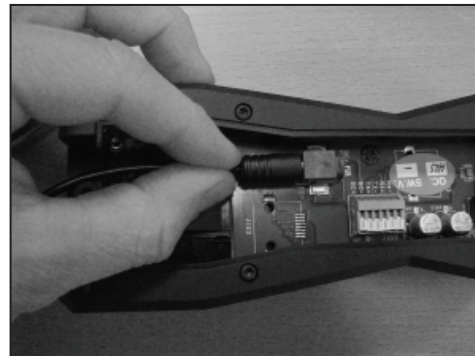
2. Remove the cover of the charging cradle.



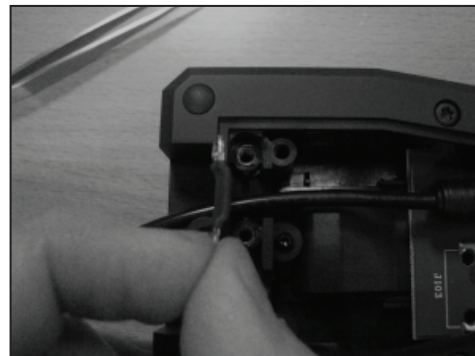
3. Unscrew the two screws which hold the cable relief bracket.



4. Remove the cable relief bracket.

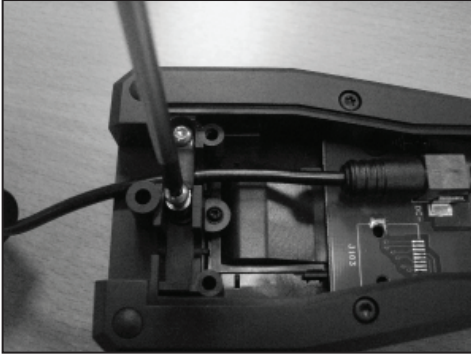


5. Take the AC/DC Adapter out of the box and insert the DC connector into the internal DC plug.

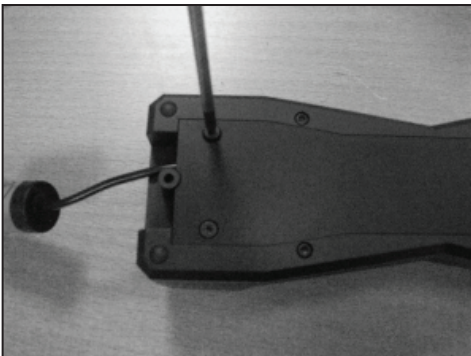


6. Place the cable in the unit and secure that the cable is in the cap of the cable relief part.

Connecting an AC/DC Adapter to the charging cradlecontinued



7. Place the cable as shown in the picture and secure it with the cable relief bracket.



8. Mount the cover and fasten the two screws.



9. Now the charging cradle can be used to charge the AVIATOR Wireless Handset when it is outside the aircraft.



10. For mounting the charging cradle use screws with a maximum diameter of 3.0 mm.